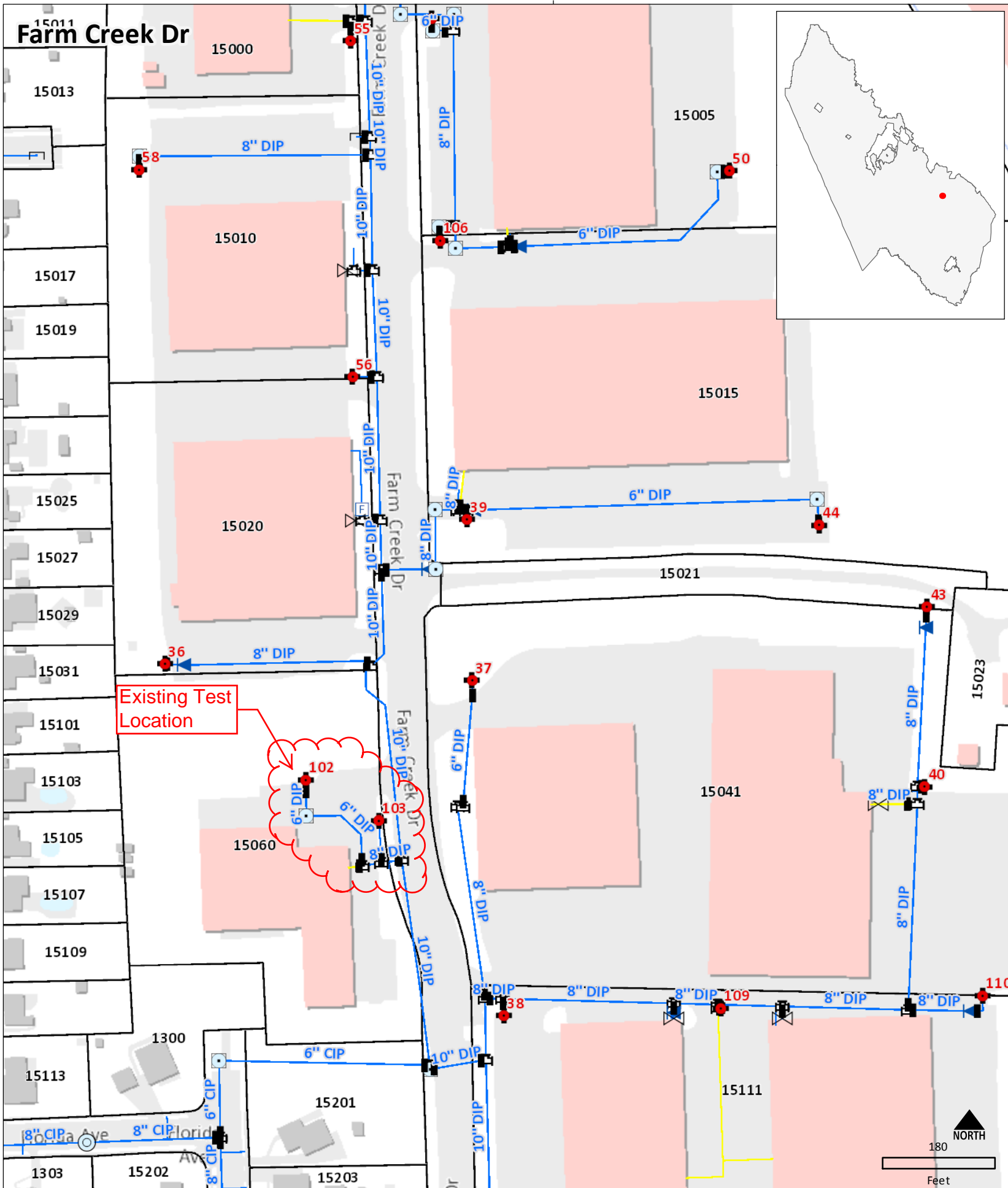
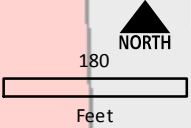
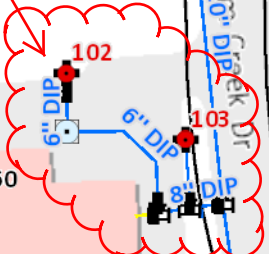


# Farm Creek Dr

38°3'730"N

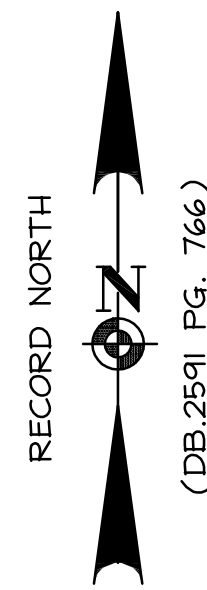


Existing Test Location



Legend		Water Assets		Sewer Assets	
	Water Hydrant		Isolation Valve, Normally Closed		Sewer Manhole
	Boundary Valve, Normally Open		Throttle Valve, Partially Open		Sewer Clean Out
	Boundary Valve, Normally Closed		Water Meter		Sewer Lift Station
	Bypass Valve, Normally Closed		Water Pump Station		PWSCA or Unknown Ownership
	Water Tank		Water Tank		Project Permitted
					Beneficial Use
					Privately Owned
					Other Jurisdiction
					Not In Service

The Prince William County Service Authority (PWCSA) will be held harmless for any direct or indirect claim based on this data. The PWCSA is not responsible for assumptions, calculations, designs or construction activities making use of or derived from this data.



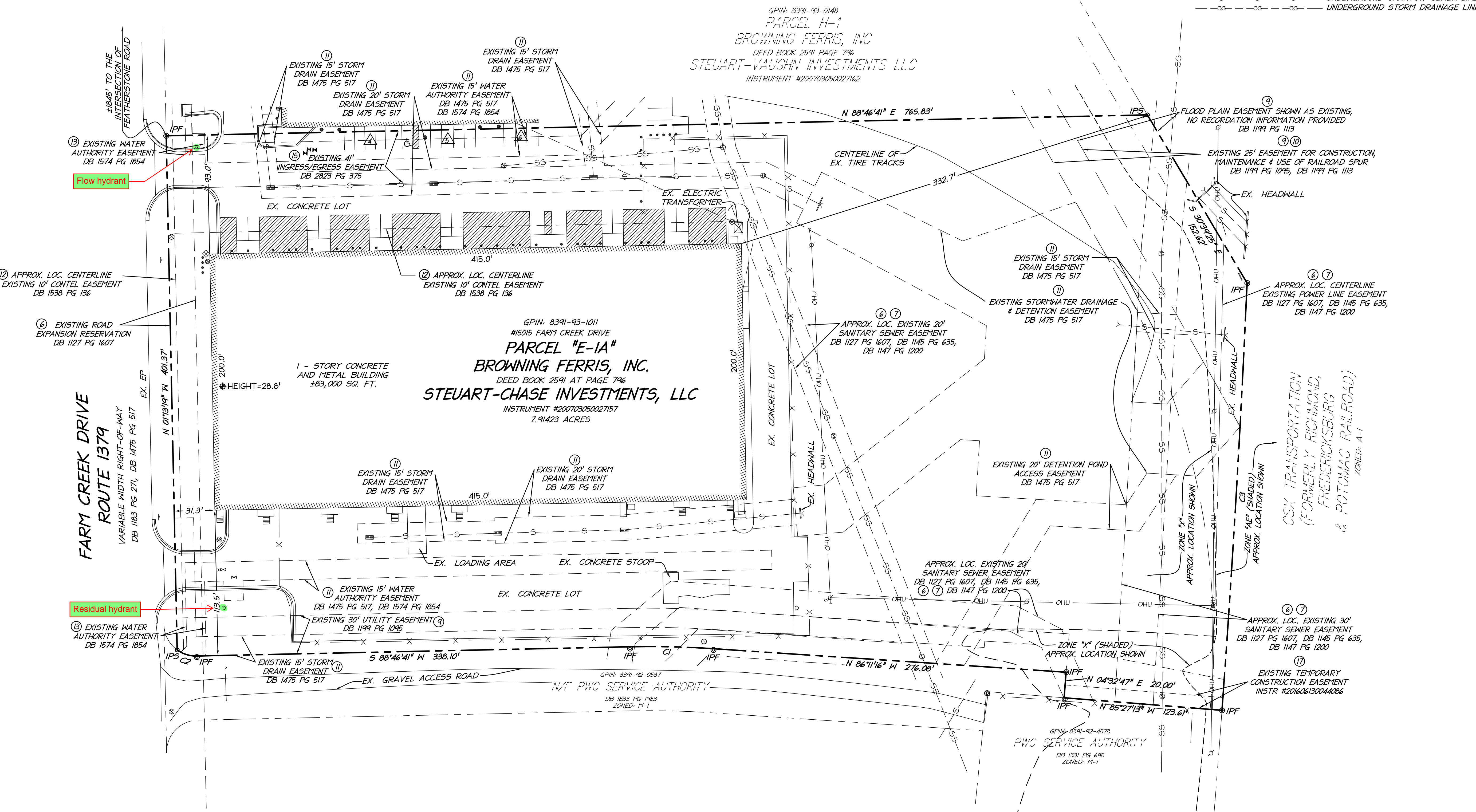
**LEGEND**

Utilities - Storm	⊙ STORM DRAIN MANHOLE	Misc. Structures	⊙ SIGN
	⊙ STORM DRAIN CULVERT		⊙ HANDICAP PARKING SPACE
	⊙ STORM DRAIN INLET		⊙ MAIL BOX
Utilities - Sanitary	⊙ SANITARY MANHOLE		⊙ BOLLARD
	⊙ SANITARY CLEANOUT		⊙ UNIDENTIFIED MANHOLE
Utilities - Electric	⊙ UTILITY POLE		⊙ HVAC UNIT
	⊙ GUY WIRE		⊙ BUILDING HEIGHT LOCATION
Utilities - Water	⊙ WATER METER	Abbreviations	⊙ NUMBER OF PARKING SPACES
	⊙ WATER VALVE	EX. EXISTING	
	⊙ FIRE HYDRANT	C4G CURB & GUTTER	
	⊙ WATER MANHOLE	IPF IRON PIPE FOUND	
Utilities - Gas	⊙ GAS VALVE	IPS IRON PIPE SET	
	⊙ GAS METER	PKF PK NAIL FOUND	
Utilities - Communication	⊙ COMMUNICATION PEDESTAL	RBF RE BAR FOUND	
		Linetypes	
		- - - - - X - - - - -	FENCE
		- - - - - OHU - - - - -	OVERHEAD UTILITY LINE
		- - - - - G - - - - -	GUARD RAIL
		- - - - - C - - - - -	CENTER OF DITCH
		- - - - - U - - - - -	UNDERGROUND COMMUNICATION MARKING
		- - - - - S - - - - -	UNDERGROUND SANITARY SEWER LINE
		- - - - - SS - - - - -	UNDERGROUND STORM DRAINAGE LINE

**christopher consultants**  
 9417 innovation drive · manassas, va 20110  
 phone 703.393.9887 · fax 703.393.9076

2016 ALTA/NSPS LAND TITLE SURVEY  
**PARCEL "E-1A", BROWNING FERRIS, INC.**  
 NON IN THE NAME OF  
**STUART-CHASE INVESTMENTS, LLC**  
 (INSTRUMENT #200703050027157)  
 WOODBRIDGE MAGISTERIAL DISTRICT  
 PRINCE WILLIAM COUNTY, VIRGINIA

PROJECT: 16147.001.00
SCALE: 1" = 40'
DATE: 01/10/17
DRAWN: PGS/WEB
CHECKED: BEE
SHEET No.
2 OF 2



**CURVE TABLE**

CURVE	RADIUS	LENGTH	DELTA	TANGENT	BEARING	CHORD
C1	741.20'	65.12'	5°22'02"	32.58'	N 88°42'18" W	65.10'
C2	25.00'	16.10'	36°53'55"	8.34'	N 72°36'23" W	15.82'
C3	11394.43'	333.99'	1°40'46"	167.01'	S 03°21'53" W	333.98'

