

Heritage Hunt Pump Station Replacement Project

Community Meeting #1

July 28, 2016

SA Project Manager:

Debbie J. Maxwell, P.E. CCM

Program Mgmt. Consultant:

Rummel, Klepper & Kahl, Inc.

Design Engineer:

Dewberry Consultants LLC



Service Authority
Exceptional Water Service

Agenda

- ◆ Purpose of the Project
- ◆ Existing and Proposed Sewage Pump Station
- ◆ Site Activities & Notes of Interest – Pump Station
- ◆ Existing Force Mains
- ◆ Site Activities & Notes of Interest – Force Mains
- ◆ Anticipated Project Duration
- ◆ Contacts
- ◆ Q&A

Purpose of the Project

- History of Regional Sewage Pump Station and Force Mains
 - The existing Regional Sewage Pump Station was constructed as an interim facility in 2001 by US Home Corporation.
 - The interim facility was always planned to be expanded to meet the ultimate sewershed demands.
 - The parcel was proffered & deeded by US Home Corp.
 - Two (2) pressure force mains and major portions of a third were constructed in 1998.

Purpose of the Project – Cont'd

◆ Purpose Of Project

- Replace existing pump station facility with a larger station equipped to handle current and future flows.
- Avoid potential sewer overflows.
- Install the remaining sections of the third force main.

◆ Benefits Of Project

- Increase system capacity.
- Maintain service reliability.
- Reduce noise and odors.



Heritage Hunt
Subdivision

Fieldstone Way

Heritage Hunt Dr.

Heritage Hunt
Clubhouse

Alderwood
Way

Service Authority
Pump Station Site

Heathcote Bl

Heritage Hunt Dr

Pageland Ln

Lee Hy

University Bl

Hy

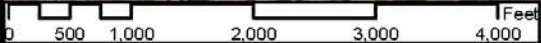
55

66

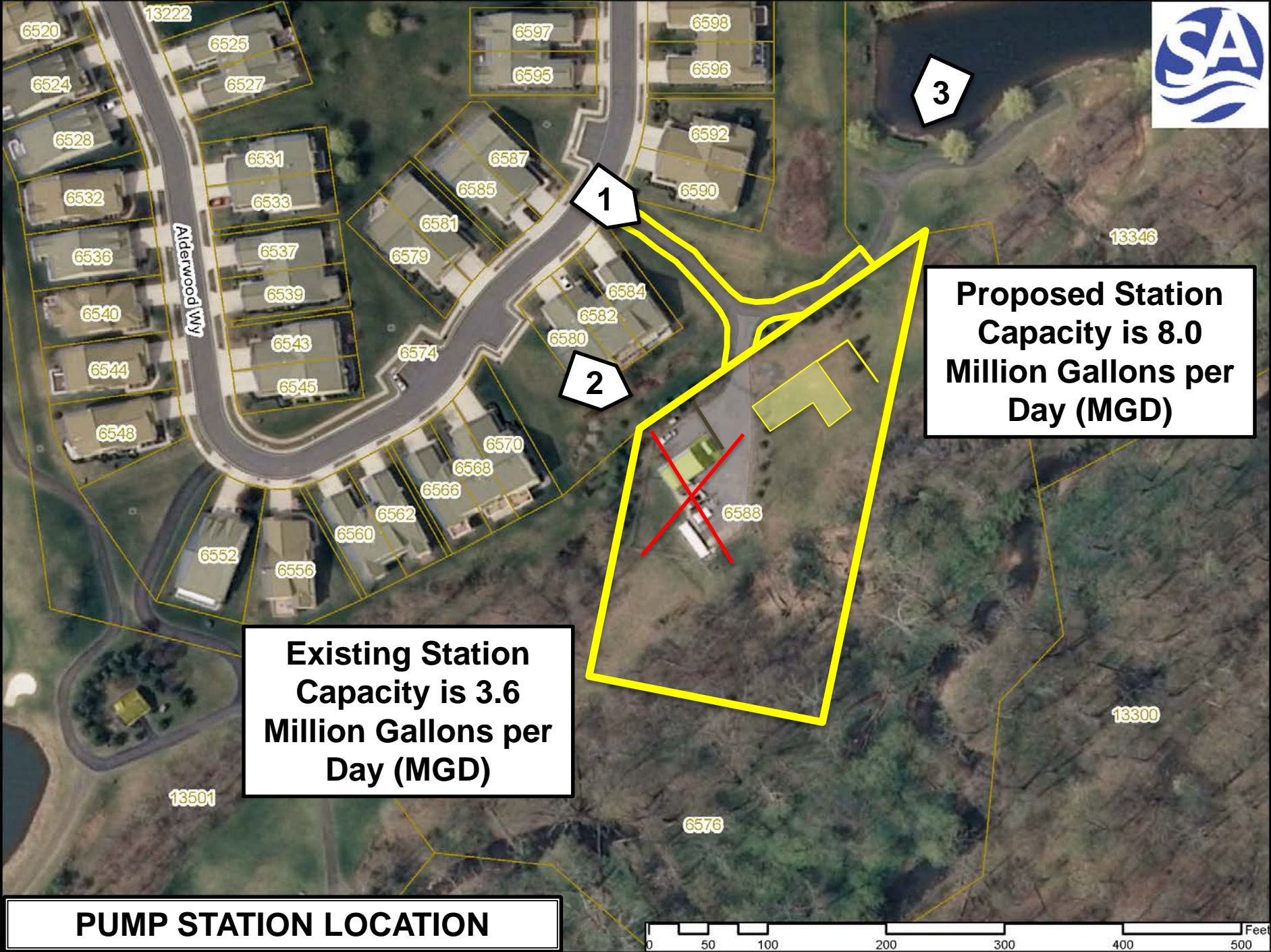
66

29

OVERALL MAP



GeoEye, Earthstar Geographics, CNES/Airbus DS, USDA, USGS, AEX, N, IGP, swisstopo, and the GIS User Community



Alderwood Wy

6520

13222

6525

6524

6527

6528

6531

6532

6533

6536

6537

6540

6539

6544

6543

6548

6545

6552

6556

6560

6562

6566

6568

6570

6579

6581

6585

6587

6580

6582

6584

6588

6597

6595

6598

6596

6592

6590

3

1

2

13346

13300

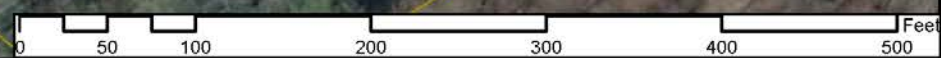
6576

13501

**Existing Station
Capacity is 3.6
Million Gallons per
Day (MGD)**

**Proposed Station
Capacity is 8.0
Million Gallons per
Day (MGD)**

PUMP STATION LOCATION



Rendering Developed from Observation Point #1



Rendering Developed from Observation Point #2



Revised Rendering Observation Point #2



Rendering Developed from Observation Point #3



Proposed Improvements

• Proposed Regional Pump Station

- Increase capacity to 8.0 MGD.
- Install an odor control system to reduce odors.
- Odor control system blowers will be enclosed.
- Locate backup power generator inside the building.
- Brick screening wall to provide sound attenuation and concealment.
- Design building architecture to match Community.

Site Activities - Pump Station Construction

- Install new sewage pump station on the same site.
- Demolish existing station.
- Restore site, access driveway and install landscaping.

Notes Of Interest - Pump Station

- Unimpeded emergency, trash, mail and other services.
- Contractor parking areas to be designated in consultation with the HOA.
- The SA will restore roads to their existing condition.
- Daily clean-up along the access roads to the Pump Station by the Contractor will be required.
- An SA Inspector will cover this project and others nearby, on a daily basis.



Test Pit Location

Service Authority
Pump Station Site

Test Pit Location

Heritage Hunt
Clubhouse

Existing Pressure
Force Mains

Conway
Robinson
Memorial
State Forest

Heritage Hunt Dr

Heathcote Bl

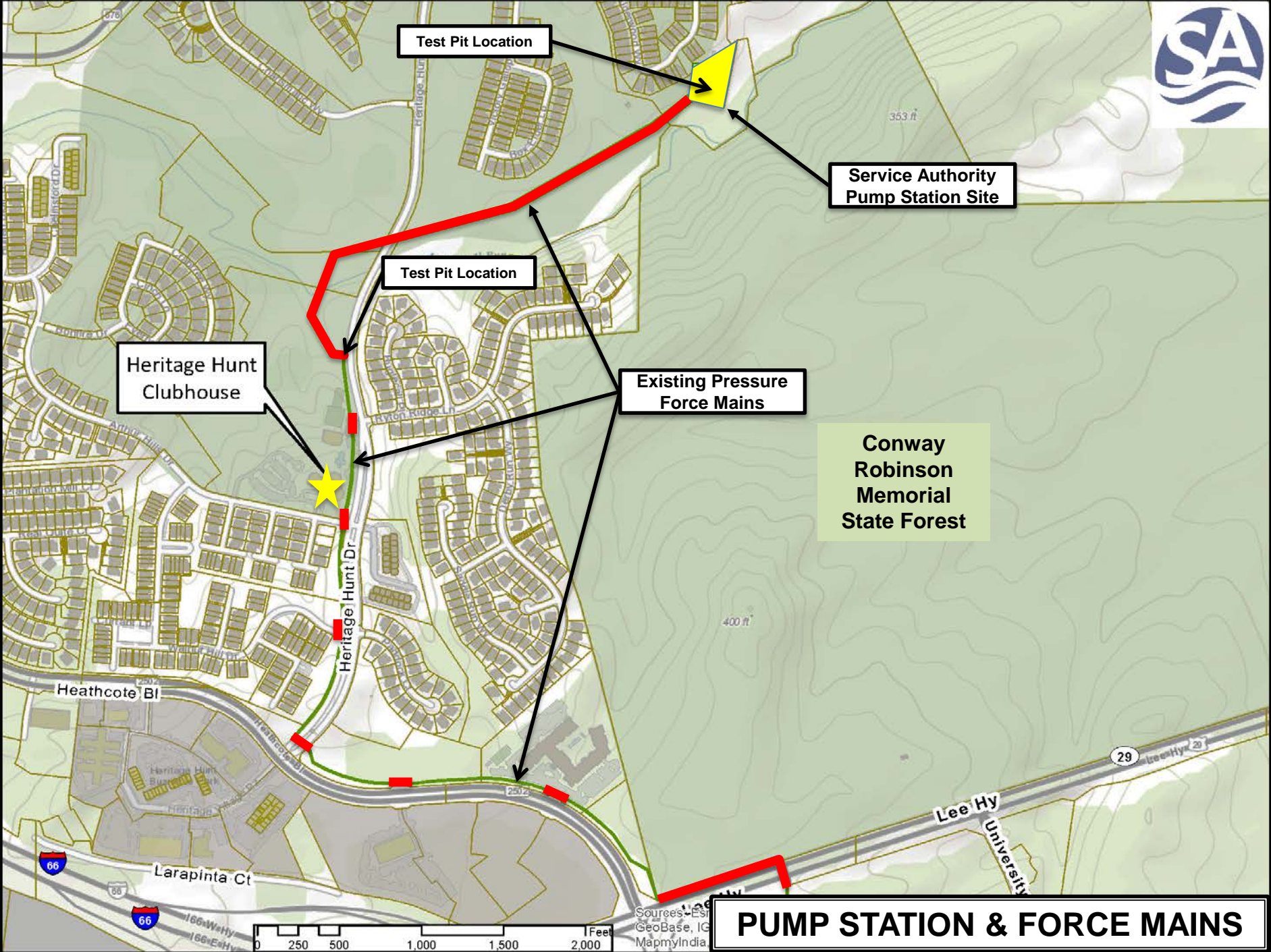
Larapinta Ct

Lee Hy
University

PUMP STATION & FORCE MAINS



Sources: Esri
GeoBase, IG
MapmyIndia



Site Activities & Notes of Interest - Force Mains

- Planned excavation will occur outside of Heritage Hunt Drive; however, periodic lane closures may occur.
- The SA will provide continuous cart path access and restore any disturbed cart path, sidewalk, grass or road to existing condition.
- Daily clean-up by the Contractor will be required.
- An SA Inspector will cover this project and others nearby on a daily basis.

Anticipated Project Duration

- Testing, Design and Permitting Timeframe:
 - January 2015 – September 2017
- Public Facility Review Process
 - September 2016
- Anticipated Sewage Pump Station and Force Main Construction Duration:
 - 24 Months

Contacts

Kathy Bentz

Community Relations and Outreach Manager

Phone: 703.335.8944

Email: heritagehunt@pwcsa.org

Project Website:

<https://www.pwcsa.org/heritage-hunt-project>

Q & A

Any Questions?