

Graham Park Sewage Pumping Station & Force Main Improvement Project

August 8, 2017

SA Project Manager: Kenneth Horner, P.E.

Design Engineer: GHD, Inc.

Program Manager: RK&K



Agenda

- ◆ Definitions
- ◆ Purpose of the Project
- ◆ Existing and Proposed Sewage Pumping Station and Force Main
- ◆ Existing and Proposed SPS and FM Easements
- ◆ Construction Notes of Interest
- ◆ Anticipated Project Duration
- ◆ Contacts
- ◆ Q&A



Definitions

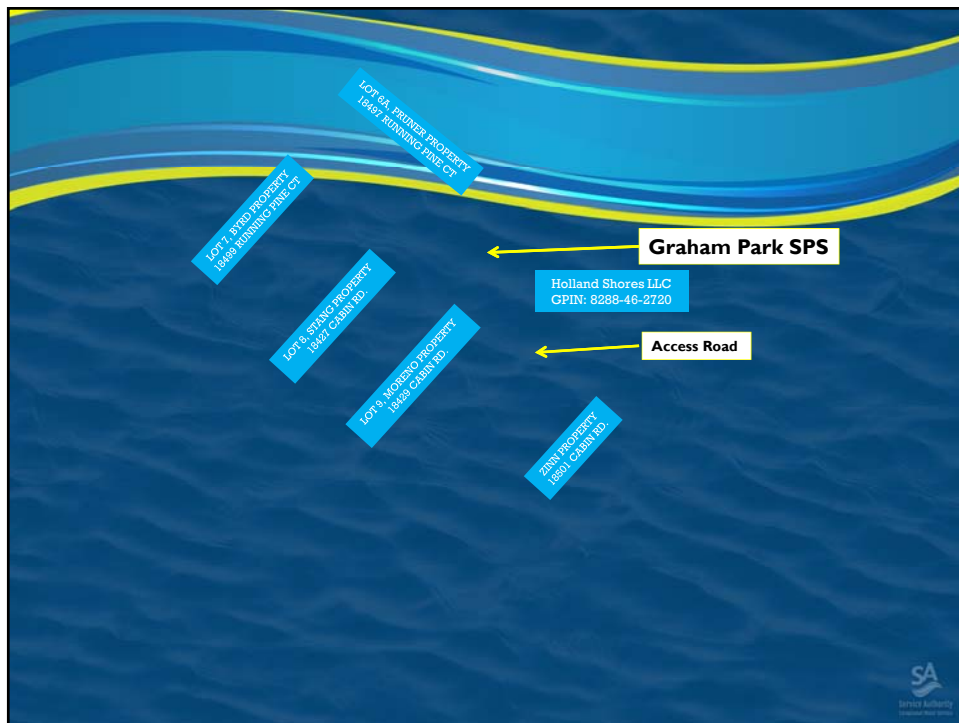
- ◆ **Sewershed** – Defines the area that contributes wastewater flows to a single point.
- ◆ **Gravity Sewer** – System of pipes and manholes that transports wastewater by gravity within a sewershed.
- ◆ **Sewage Pumping Station** – A pumping station is the collection point for a gravity sewer system and provides conveyance of the sewage to another sewershed, pumping station or a treatment plant.
- ◆ **Force Main** – System of pipes and valves that transports wastewater under pressure from a pumping station.
- ◆ **Discharge Manhole** – Vertical access shaft from the ground surface to a sewer or underground utilities.

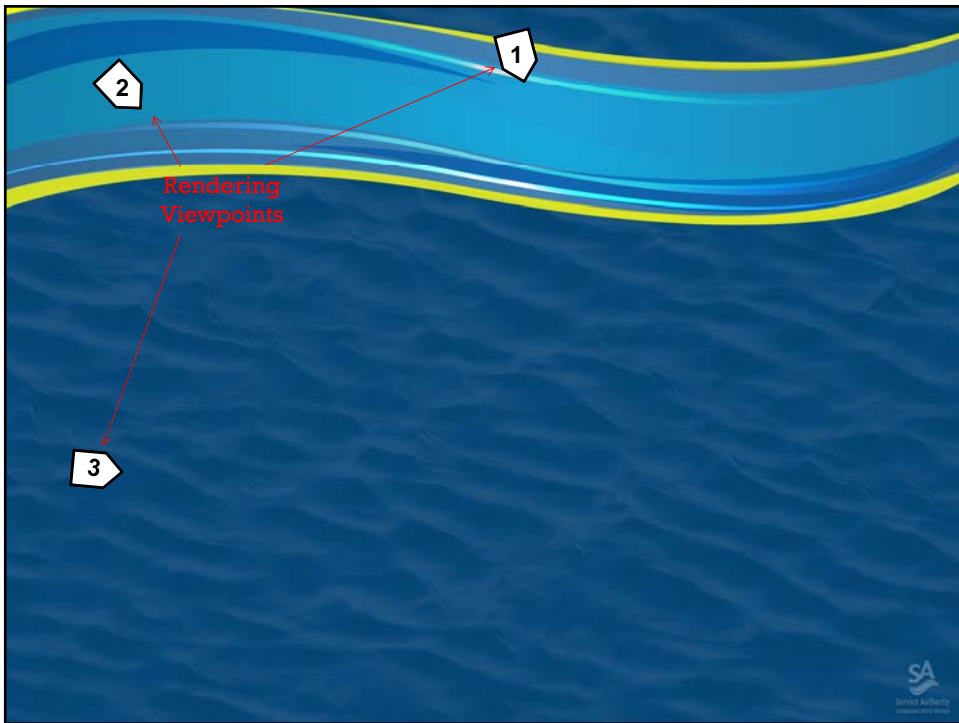


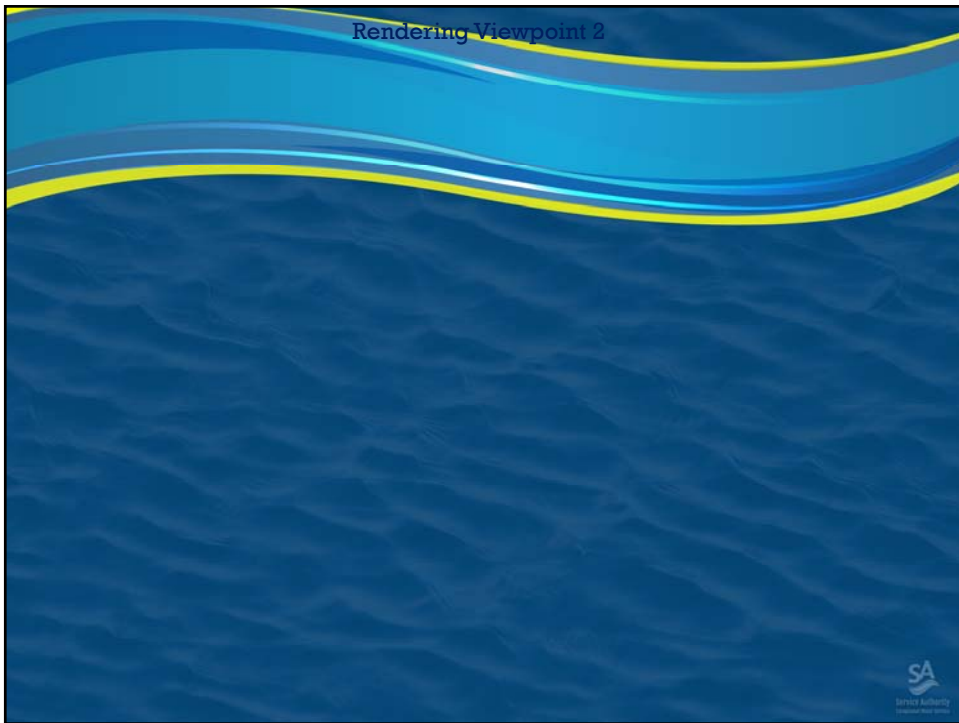
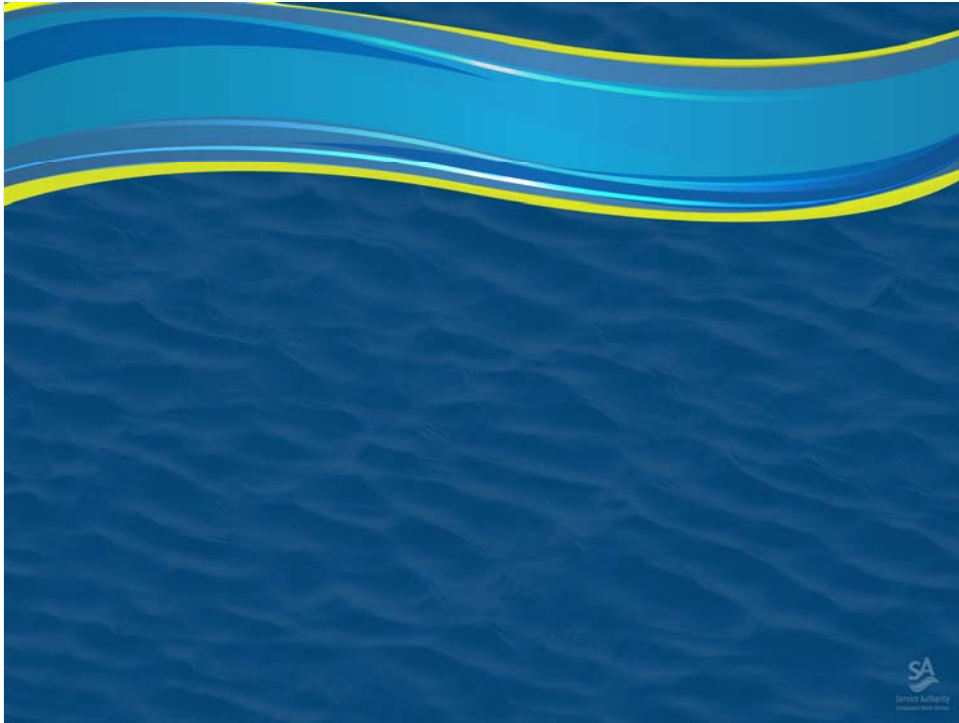
Purpose of the Project

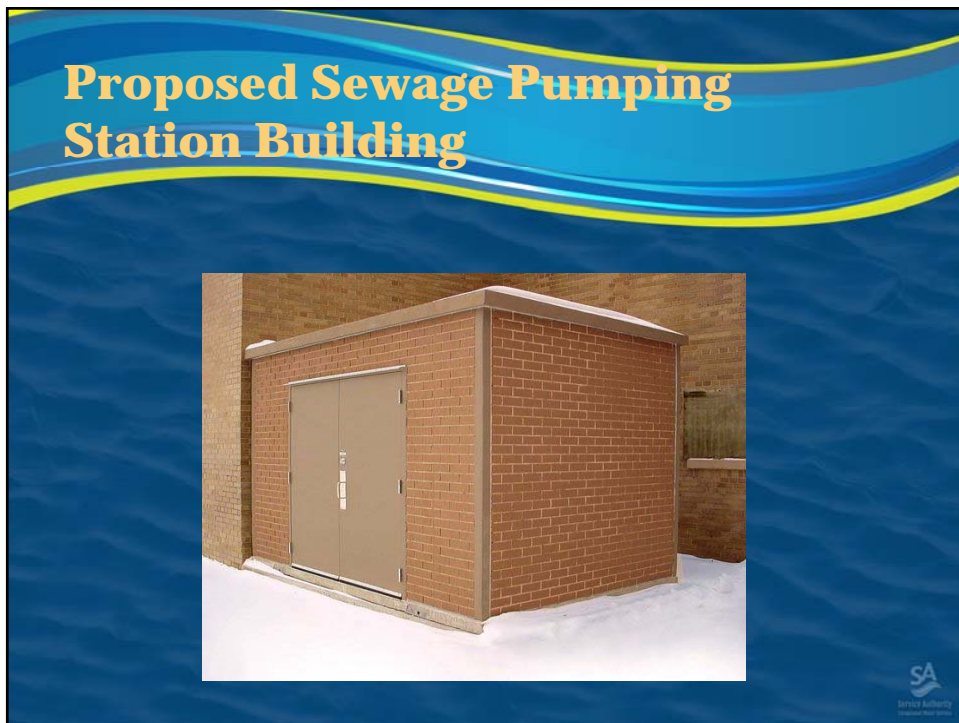
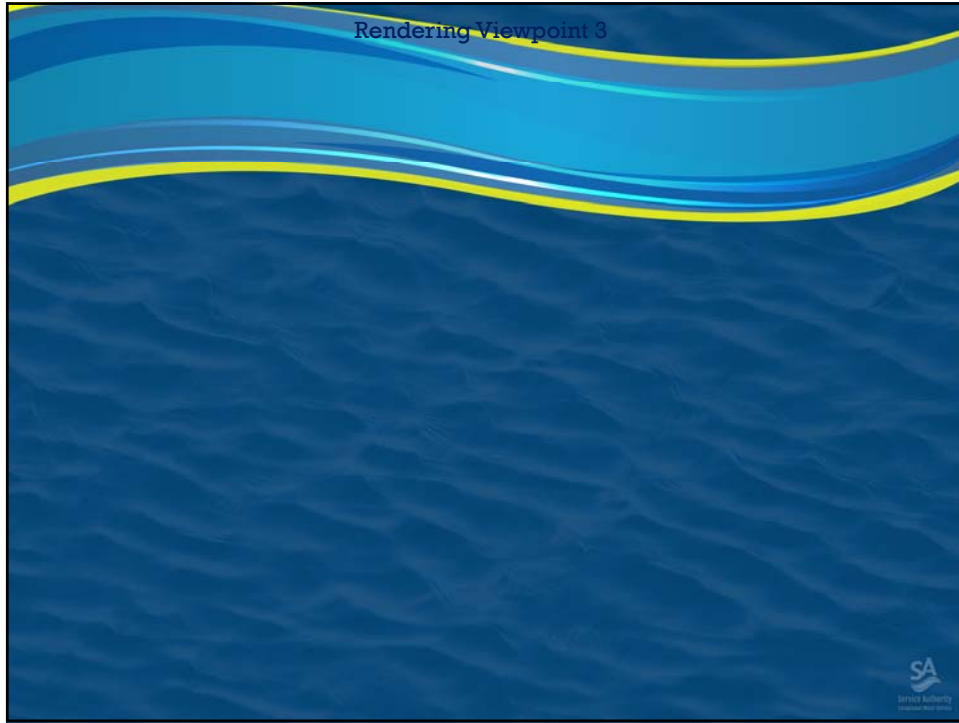
- ◆ **Purpose of the Project**
 - ◆ Replace an existing antiquated Sewage Pumping Station and Force Main.
 - ◆ Improve Sewage Pumping Station reliability.
 - ◆ Raise equipment above 100-year flood plain elevation.
- ◆ **Benefits of the Project**
 - ◆ Improve Safety Conditions.
 - ◆ Maintain the SA's Commitment to Service Reliability.



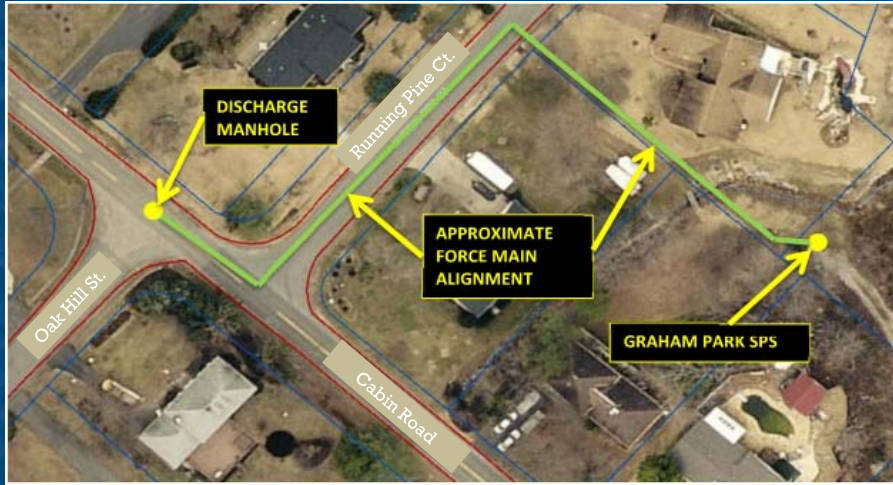








Proposed Force Main Alignment



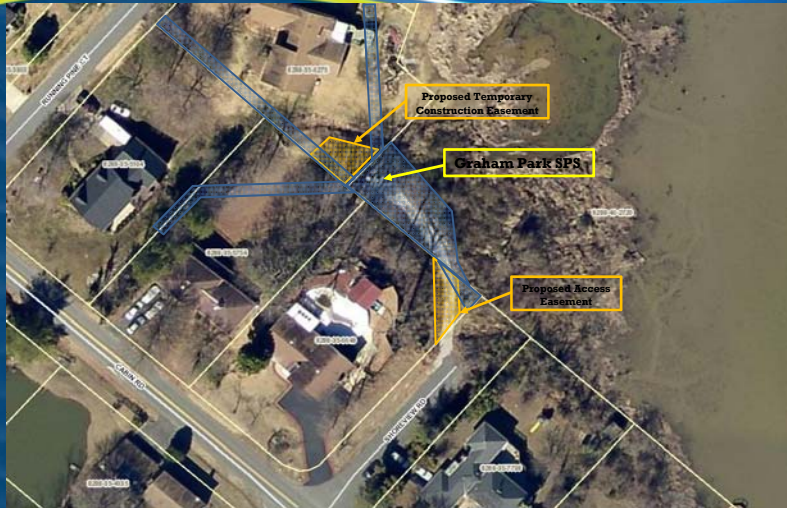
Existing Easements



Note - Easement extents shown are approximate



Proposed Pumping Station Easements



Note - Easement extents shown are approximate



Proposed Force Main Easements



Note - Easement extents shown are approximate



Notes Of Interest During Construction

- Ensure unimpeded emergency, school bus, trash, mail and other services.
- The SA will restore roads to their existing or better conditions if disturbed by construction activities.
- Daily clean-up along the access roads to the Pumping Station by the Contractor will be required.
- Temporary parking areas will be negotiated by the Contractor with property owners and VDOT prior to construction.
- An SA Inspector will cover this project and others nearby on a daily basis.



Anticipated Project Schedule

- ◆ Public Facility Review Process:
 - PFR Hearing - September 20, 2017
- ◆ Design and Permitting Timeframe:
 - December 2015 – November 2018
- ◆ Anticipated Start of Construction:
 - Spring 2019
- ◆ Anticipated Construction Duration:
 - Approximately 1 year



Contacts

- ◆ Community Relations Liaison
 - Marlo Thomas Watson
 - 571.285.8127
 - Email: grahamparksps@pwcsa.org
 - Project Specific Website:
<http://www.pwcsa.org/graham-park-sewage-pump-station>



Discussion

Any Questions?

