

Heritage Hunt Force Main – Subsurface Exploration

Informational Meeting
August 9, 2017

SA Project Manager:

Debbie J. Maxwell, P.E., CCM

Program Mgmt. Consultant:

Rummel, Klepper & Kahl, Inc.

Design Engineer:

Dewberry Consultants LLC

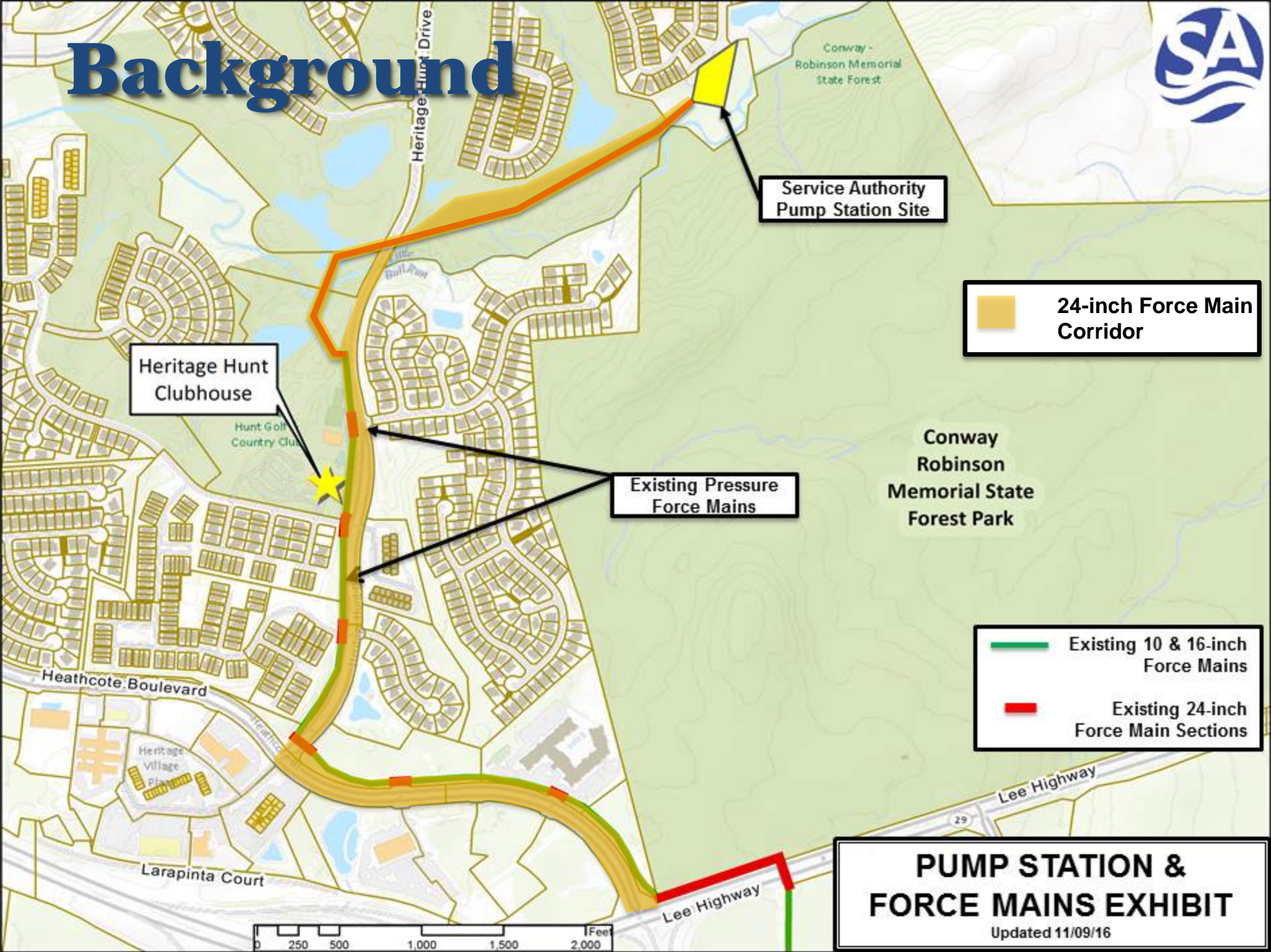


Service Authority
Exceptional Water Service

Agenda

- ◆ Background
- ◆ Purpose of Project
- ◆ Scope of Work
- ◆ Community Impact
- ◆ Schedule
- ◆ Q&A

Background



Service Authority
Pump Station Site

24-inch Force Main
Corridor

Heritage Hunt
Clubhouse

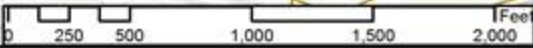
Existing Pressure
Force Mains

Conway
Robinson
Memorial State
Forest Park

Existing 10 & 16-inch
Force Mains

Existing 24-inch
Force Main Sections

**PUMP STATION &
FORCE MAINS EXHIBIT**
Updated 11/09/16



Purpose of the Project

Assist in determination of a preferred alignment of the FM.

Scope of Work

◆ Survey

- ◆ Dewberry surveyors will survey the existing easement and mark the area.

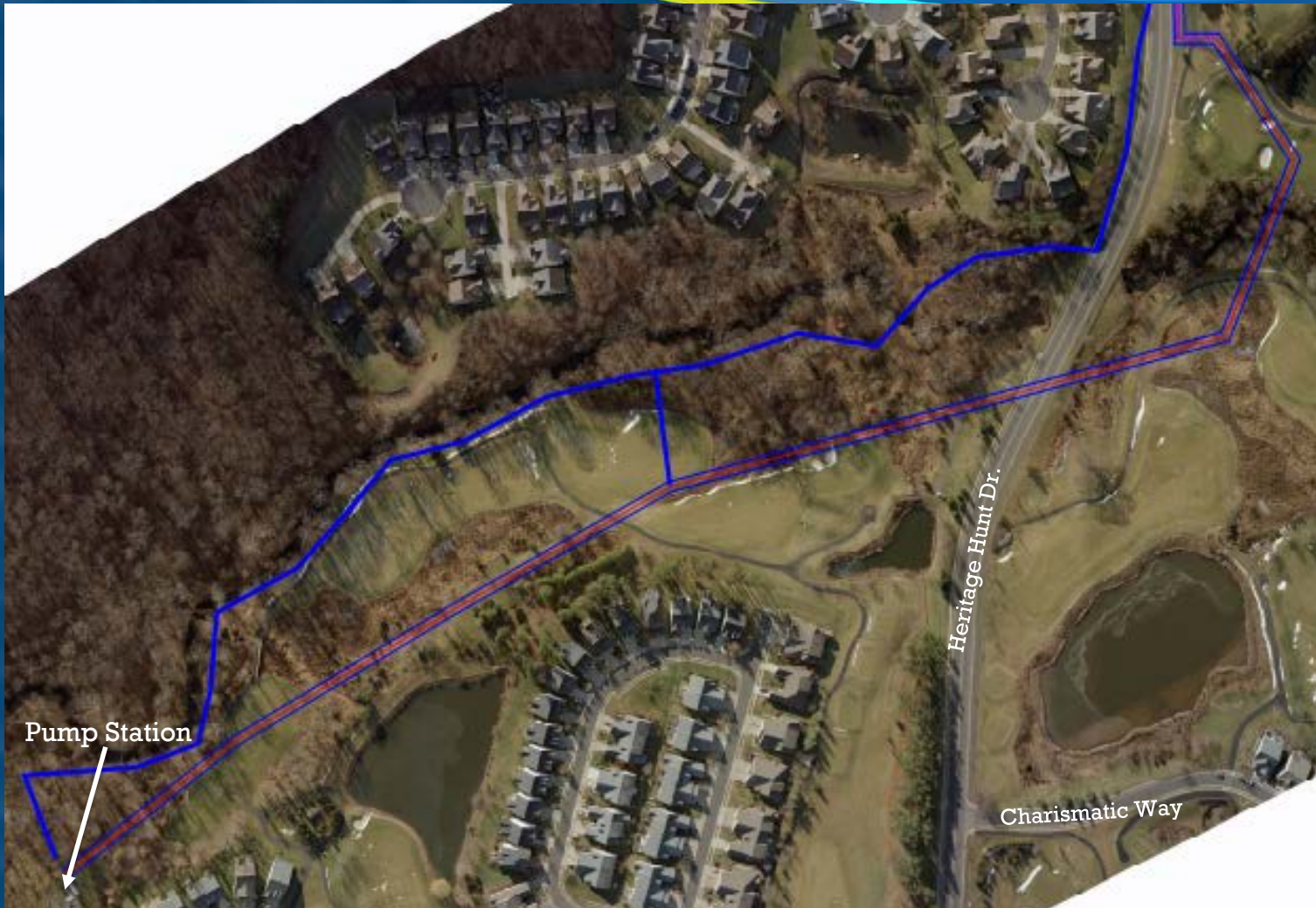
◆ Utility Locating Service

- ◆ Accumark will perform locations of underground utilities in the area.

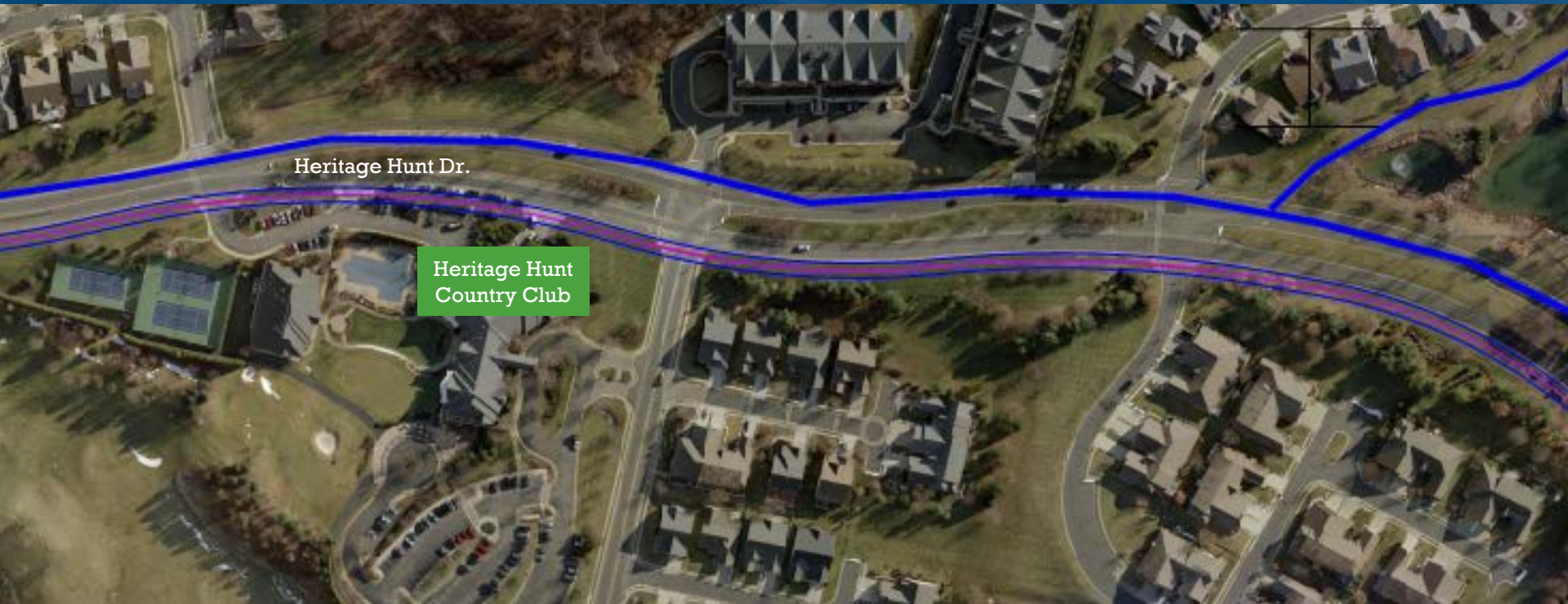
◆ Seismic Refraction

- ◆ ECS will perform seismic refraction of the alignments shown to determine subsurface geology.

Scope of Work



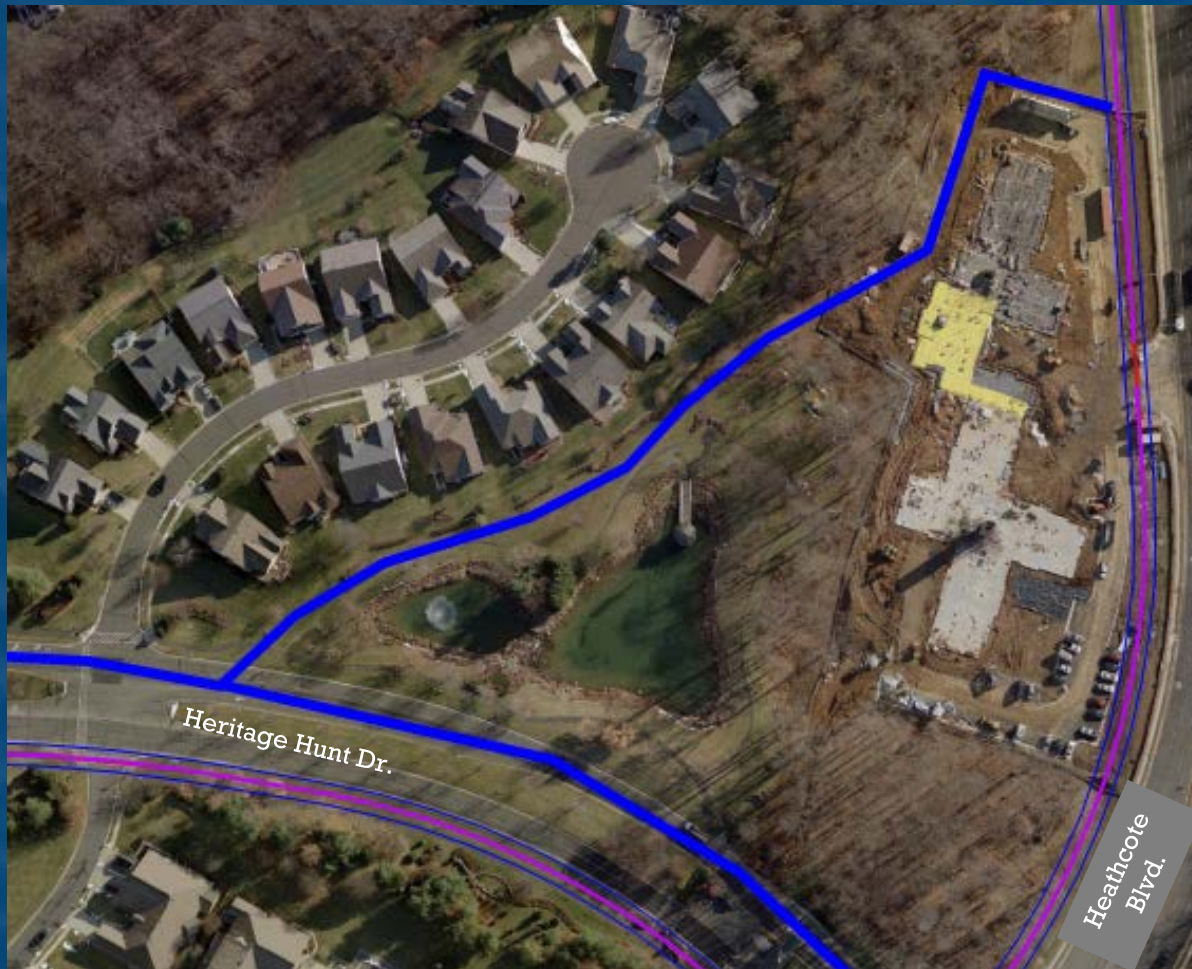
Scope of Work



Heritage Hunt Dr.

Heritage Hunt
Country Club

Scope of Work



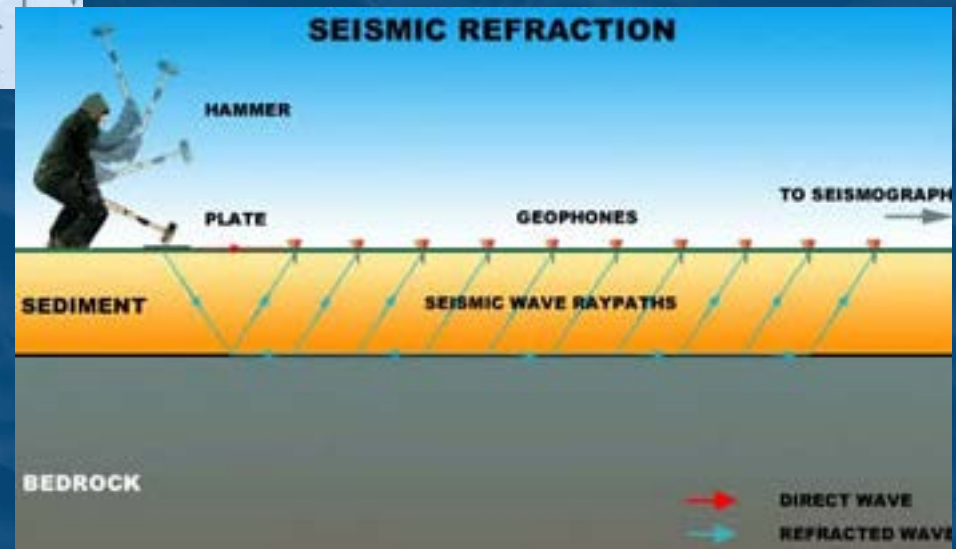
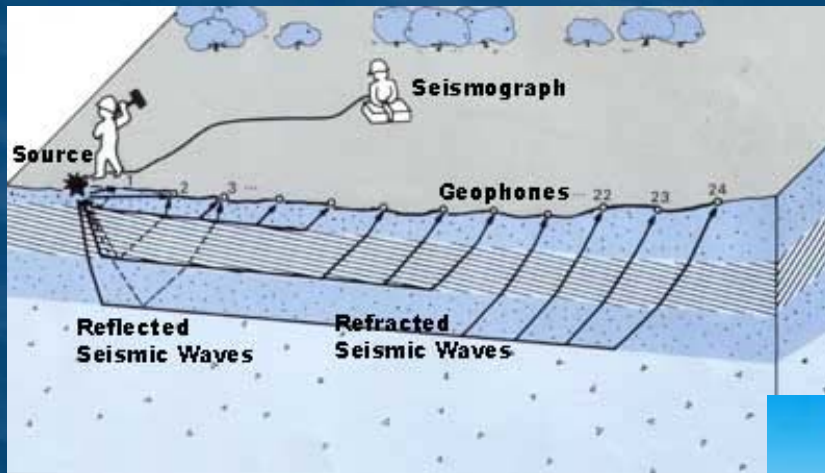
Scope of Work - Survey

- ◆ Dewberry surveyors will be on site to locate and mark the alignments.
- ◆ Areas with more turns will require more markings.
- ◆ Marking methods
 - ◆ Flag (For grassy areas)
 - ◆ Stake (For grassy areas)
 - ◆ Paint (For grassy areas or pavement)
 - ◆ Nails (For grassy areas or pavement)
- ◆ Community Preference

Scope of Work - Seismic Refraction

- ◆ Seismic refraction is the study of subsurface geology using minimally invasive technology.
- ◆ Geophones are installed in a line to gather data.
- ◆ Will create noise
 - ◆ Sledgehammer striking metal plate
 - ◆ Demonstration after meeting
- ◆ Golf course coordination
- ◆ Weather dependent

Scope of Work - Seismic Refraction



Community Impact

- ◆ Golf Course
- ◆ Roadways
- ◆ Walking Trails
- ◆ Noise & Visual Impacts

Anticipated Task Duration

- ◆ Field Work Timeframe:
 - ◆ Start - August 14, 2017
 - ◆ Duration – Approximately 4-5 weeks
- ◆ Preliminary Findings - November 2017
- ◆ Alignment Selection – end of 2017

Contacts

- ◆ Community Relations & Outreach Liaison
 - ◆ Marlo Thomas Watson
 - ◆ 571.285.8127
 - ◆ Email: heritagehunt@pwcsa.org
 - ◆ Project Specific Website:
<http://www.pwcsa.org/heritage-hunt-project>

Q & A

Any Questions?