

WASTE to WATER



START HERE!



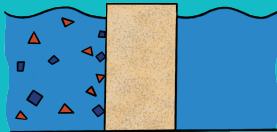
Wastewater is the dirty water that leaves homes and schools after you use it.

Did you know the Service Authority cleans 10 billion gallons of wastewater each year? That is a lot of flushing, bathing and laundry! Follow the maze to uncover how we take your dirty water and make it clean enough to return to the environment.



1. SCREENING

After wastewater moves through sewage pipes, it goes through a screen that captures things that should NOT have been flushed, like wipes and cotton swabs.



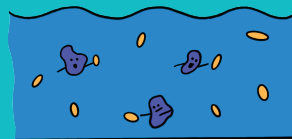
4. FILTRATION

Here, the wastewater moves through six feet of special sand to trap small particles.



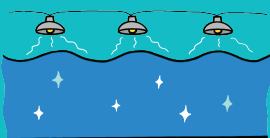
2. SETTLING

A good chemical is added to the wastewater to make pieces of dirt stick together and get heavy. The scum that floats to the top and the clumps that fall to the bottom are scraped out.



3. BIOLOGICAL TREATMENT

Tiny living things called microbes swim in the wastewater and remove extra elements that can harm plants and animals that live in streams and rivers.



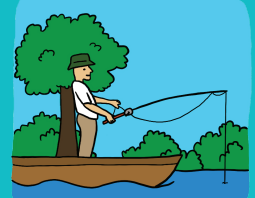
5. DISINFECTION

Next, the water is zapped with ultraviolet light to kill any germs and viruses.



6. AERATION

Now clean, the water tumbles down a special staircase, fizzes up with oxygen and flows into the creek below.



7. BACK TO NATURE