

PWCSA CAPITAL IMPROVEMENT PROJECT DATA SHEET

PROJECT INFORMATION

Project Name: Unity Reed (F14) Booster Pumping Station and Discharge Main
CIP Number: WSUP-116
JDE Number(s): 22WGWM0901, 24WGWM0901
Location: 8814 Rixlew Ln., Manassas
Pressure Zone: GW - Gainesville
Sewershed: FB – Flat Branch
Magisterial District: BR - Brentsville
Project Estimate: PER
Estimate By: Engineering and Planning Division

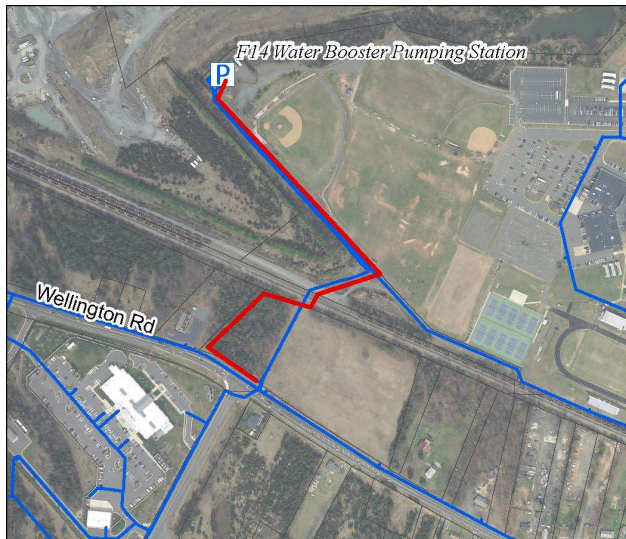
PROJECT DESCRIPTION

Project Description: This project includes the design and construction of new and upgraded pumps and associated appurtenances, site work, electrical upgrades, new generator, new SCADA systems, and a control building to expand the capacity of the booster pumping station. The project also includes the design and construction of approximately 2,100 feet of 36-inch transmission main from the booster pumping station to Wellington Road and associated easement acquisition.

Project Benefit: The increased pumping capacity at the booster pumping station shall improve pumping efficiencies and provide better service and reliability to existing and future customers in the Gainesville pressure zone. The project shall also provide an additional supply from the discharge at the booster pumping station to improve reliability in the Gainesville pressure zone should there be a break in the single existing 42-inch discharge main at the railroad crossing.

Source Derivation: Engineering and Planning Division; Gainesville Discharge Main PER - Michael Baker, July 2019; Managed by Engineering and Planning Division

PROJECT PICTURE



PROJECT FUNDING

PRE-FY22	FY22	FY23	FY24	FY25	FY26	POST-FY26	TOTAL
130	835	6030	6000	1128	0	0	14123

Proposed Funding Sources	
Exp. Fund (02) – Availability Fees	50%
Commit. Fund (03) – Availability Fees	-
Repl. Fund (04) – User Rates	50%
Other Contrib. – Development Contributions	-
PROJECT TOTAL	100%