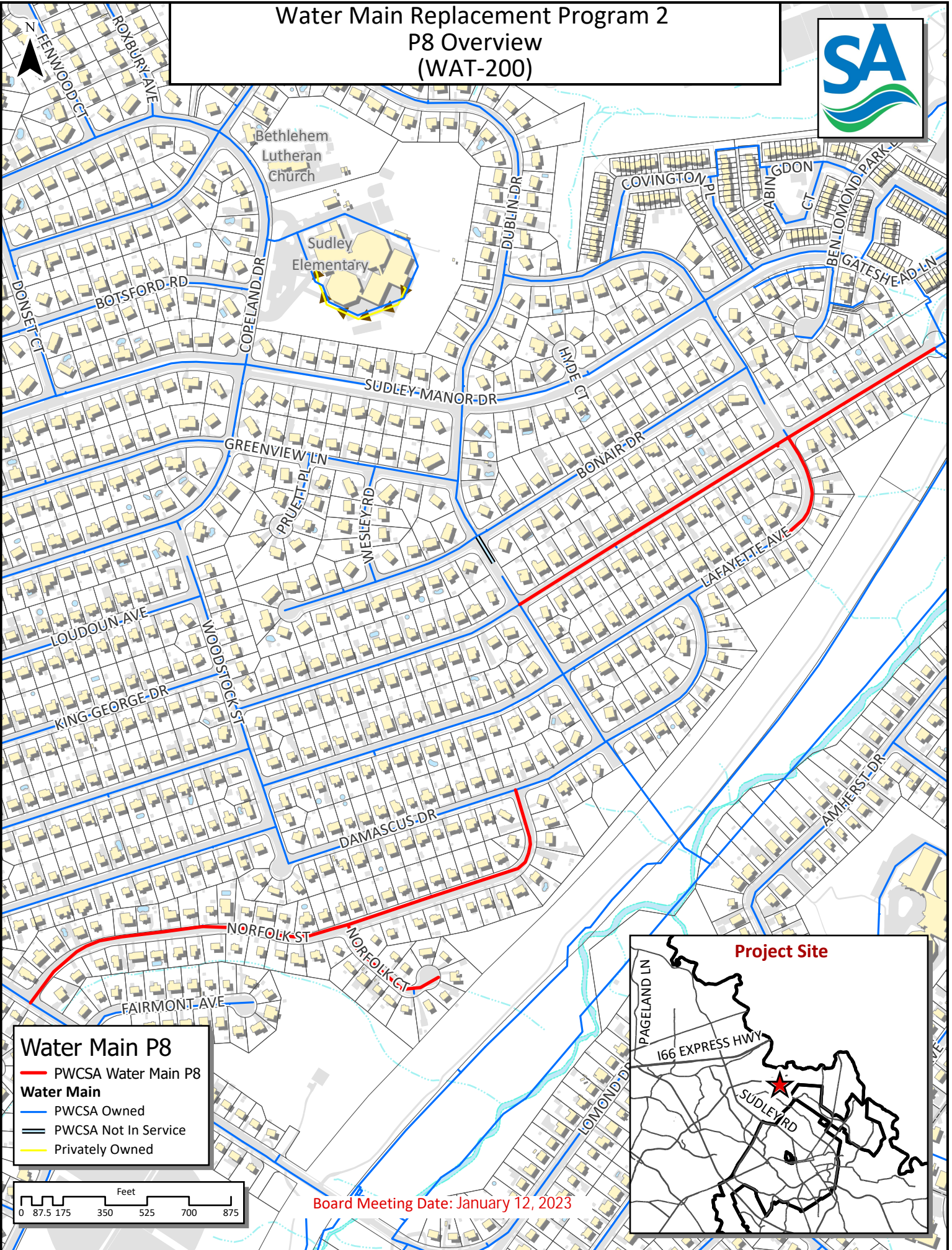


**PWCSA CAPITAL IMPROVEMENT PROJECT DATA SHEET**

| <b>PROJECT INFORMATION</b>   |   | <b>PROJECT DESCRIPTION</b>  |  |
|------------------------------|---|-----------------------------|--|
| <b>Project Name:</b>         | <b>Water Distribution Asset Replacement Program</b> | <b>Project Description:</b> | Replacement of water distribution assets including water main, hydrants, service lines, meter crocks, and isolation valves. The assets scheduled for replacement during this 5-year CIP period include: water mains in Paxton Street, King George street, Willow Lane, Norfolk Street, Salem Street, Cabin Road, Hylton Avenue, Bayside Avenue and the replacement of hydrants and valves throughout the system. The timing and execution of these projects are subject to change based on operational needs and priorities. |
| <b>CIP Number:</b>           | WAT-200   | <b>Project Benefit:</b>     | The replacement of water distribution assets will improve reliability, increase fire protection, reduce maintenance costs, and improve overall customer service.   |
| <b>JDE Number(s):</b>        | Not Assigned  | <b>Source Derivation:</b>   | Operations and Maintenance Division; Managed by the Engineering and Planning Division, Project Management Office and Operations and Maintenance Division.  |
| <b>Location:</b>             | County Wide   |                             |  |
| <b>Pressure Zone:</b>        | Multiple  |                             |  |
| <b>Sewershed:</b>            | Multiple  |                             |  |
| <b>Magisterial District:</b> | Multiple  |                             |  |
| <b>Project Estimate:</b>     | Order of Magnitude                                  |                             |  |
| <b>Estimate By:</b>          | Engineering and Planning Division                   |                             |  |

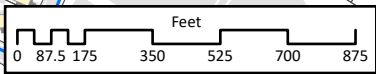
| <b>PROJECT PICTURE</b> |      | <b>PROJECT FUNDING</b>  |      |             |      |            |       |  |  |          |      |      |      |      |      |            |       |   |      |      |      |      |      |
|------------------------|------|---|------|-------------|------|------------|-------|--|--|----------|------|------|------|------|------|------------|-------|---|------|------|------|------|------|
|                        |      | <b>Proposed Funding Sources</b>   |      |             |      |            |       |  |  |          |      |      |      |      |      |            |       |   |      |      |      |      |      |
|                        |      | <table border="1"> <thead> <tr> <th>PRE-FY23</th> <th>FY23</th> <th>FY24</th> <th>FY25</th> <th>FY26</th> <th>FY27</th> <th>POST- FY27</th> <th>TOTAL</th> </tr> </thead> <tbody> <tr> <td align="center">0</td> <td align="center">3500</td> <td align="center">3500</td> <td align="center">3500</td> <td align="center">3500</td> <td align="center">3500</td> <td align="center">18000</td> <td align="center">35500</td> </tr> </tbody> </table> |      |             |      |            |       |  |  | PRE-FY23 | FY23 | FY24 | FY25 | FY26 | FY27 | POST- FY27 | TOTAL | 0 | 3500 | 3500 | 3500 | 3500 | 3500 |
| PRE-FY23               | FY23 | FY24  | FY25 | FY26        | FY27 | POST- FY27 | TOTAL |  |  |          |      |      |      |      |      |            |       |   |      |      |      |      |      |
| 0                      | 3500 | 3500  | 3500 | 3500        | 3500 | 18000      | 35500 |  |  |          |      |      |      |      |      |            |       |   |      |      |      |      |      |
|                        |      | Exp. Fund (02) – Availability Fees  |      | -           |      |            |       |  |  |          |      |      |      |      |      |            |       |   |      |      |      |      |      |
|                        |      | Commit. Fund (03) – Availability Fees   |      | -           |      |            |       |  |  |          |      |      |      |      |      |            |       |   |      |      |      |      |      |
|                        |      | Repl. Fund (04) – User Rates  |      | 100%        |      |            |       |  |  |          |      |      |      |      |      |            |       |   |      |      |      |      |      |
|                        |      | Other Contrib. – Development Contributions  |      | -           |      |            |       |  |  |          |      |      |      |      |      |            |       |   |      |      |      |      |      |
|                        |      | <b>PROJECT TOTAL</b>  |      | <b>100%</b> |      |            |       |  |  |          |      |      |      |      |      |            |       |   |      |      |      |      |      |

# Water Main Replacement Program 2 P8 Overview (WAT-200)

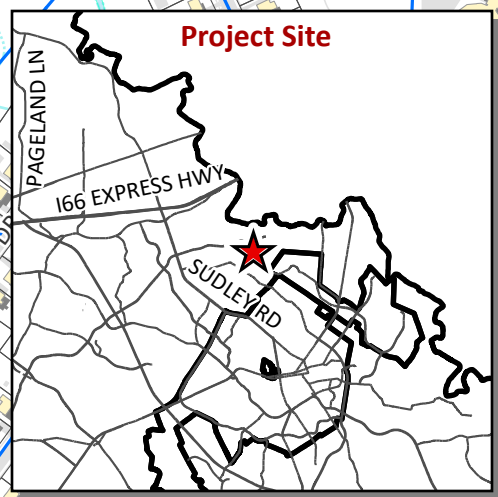


**Water Main P8**

- PWCSA Water Main P8
- Water Main
- PWCSA Owned
- PWCSA Not In Service
- Privately Owned

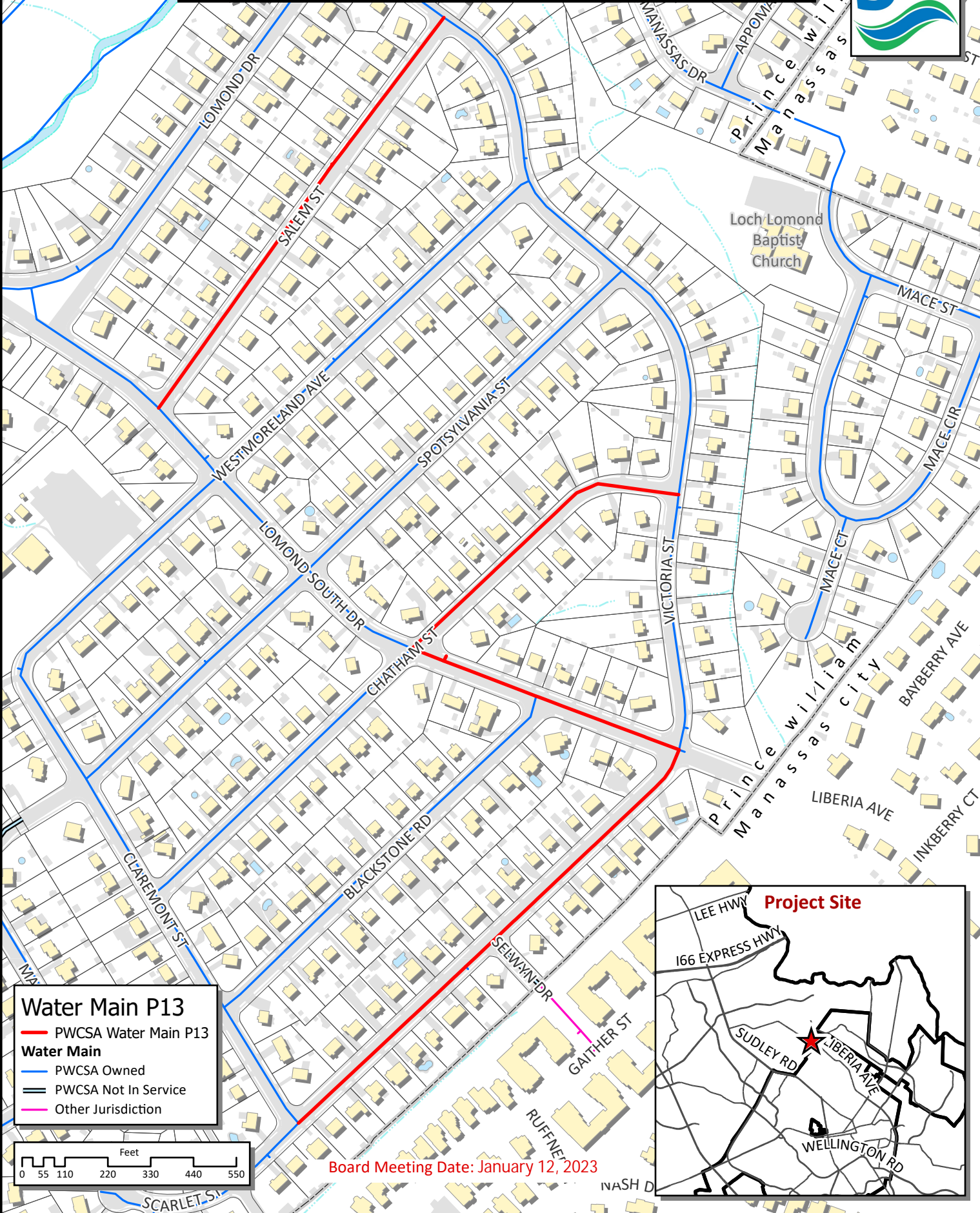


Board Meeting Date: January 12, 2023



\\sa18\eam\EnterpriseDataManagement\MapTemplates\Board\Maps\Engineering\Water\_Main\_Replacement\_Program\_2\_P8\_P13\p8&p13.aprx Date Saved: 11/18/2022

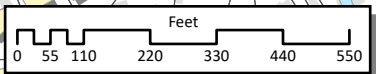
# Water Main Replacement Program 2 P13 Overview (WAT-200)



Loch Lomond Baptist Church

**Water Main P13**

- PWCSA Water Main P13
- PWCSA Owned
- PWCSA Not In Service
- Other Jurisdiction



Board Meeting Date: January 12, 2023

