

**PWCSA CAPITAL IMPROVEMENT PROJECT DATA SHEET**

**PROJECT INFORMATION**

**Project Name:** Route 1 Transmission Main – Phase 2  
**CIP Number:** WAT-182  
**JDE Number(s):** 22WDMM0002, 24WDMM0002  
**Location:** Rt. 1 from Rt. 234 to Fuller Heights Rd.  
**Pressure Zone:** DM – Dumfries  
**Sewershed:** DM – Dumfries and LC – Little Creek  
**Magisterial District:** PO – Potomac  
**Project Estimate:** Contract Award  
**Estimate By:** Engineering and Planning Division

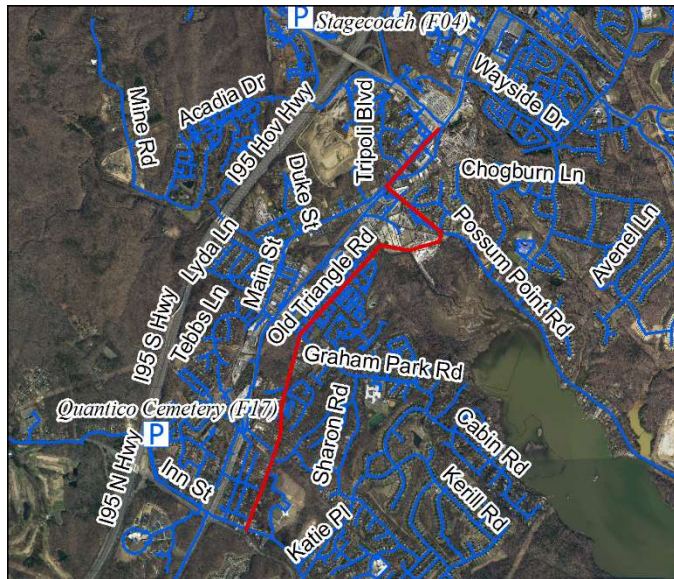
**PROJECT DESCRIPTION**

**Project Description:** Design and construction of approximately 8,750 feet of 24-inch water main along Route 1 from Route 234 to Graham Park Road, and 5,500 feet of 16-inch water main along Old Triangle Road from Graham Park Road to Fuller Heights Road.

**Project Benefit:** This project shall increase transmission capacity, reliability, and redundancy within the Dumfries pressure zone south of Route 234 and enable several existing older cast iron water mains that have experienced numerous breaks to be removed from service.

**Source Derivation:** Engineering and Planning Division; WRA East End Water System Technical Memo, 2001; Managed by Engineering and Planning Division

**PROJECT PICTURE**



**PROJECT FUNDING**

PRE-FY22	FY22	FY23	FY24	FY25	FY26	POST-FY26	TOTAL
1500	5500	6250	486	0	0	0	13736

Proposed Funding Sources	
Exp. Fund (02) – Availability Fees	-
Commit. Fund (03) – Availability Fees	50%
Repl. Fund (04) – User Rates	50%
Other Contrib. – Development Contributions	-
<b>PROJECT TOTAL</b>	<b>100%</b>