

PWCSA CAPITAL IMPROVEMENT PROJECT DATA SHEET

PROJECT INFORMATION

Project Name: Route 1 Water Main Reinforcement, North
CIP Number: WAT- 129
JDE Number(s): 22WWLM8101, 24WWLM8101
Location: Rt. 1, from Featherstone Rd. to Annapolis Way
Pressure Zone: WL – Woodbridge
Sewershed: BM – Belmont
Magisterial District: WB – Woodbridge
Project Estimate: Contract Award
Estimate By: Engineering and Planning Division

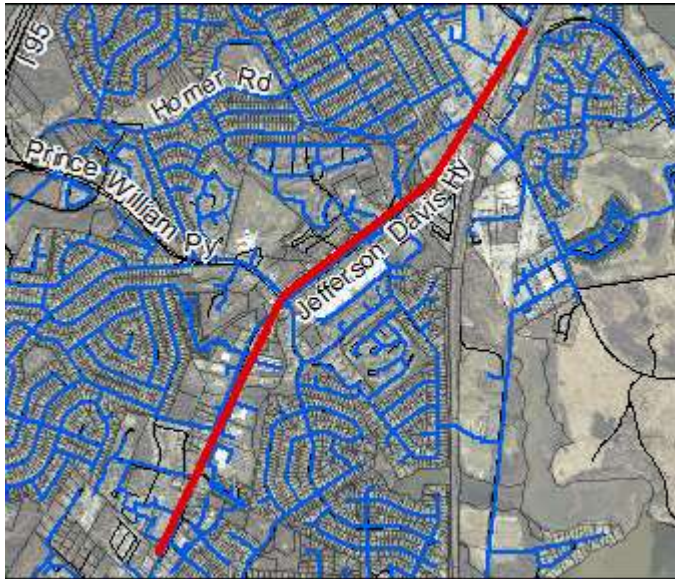
PROJECT DESCRIPTION

Project Description: Construction of approximately 15,000 feet of 16-inch, 12-inch and 8-inch water main along the Route 1 corridor from Featherstone Road north to Annapolis Way. This phase is from Mary’s Way to Annapolis Way with the remainder to be constructed in a future phase. The project shall connect to the 16-inch main constructed with a prior CIP Project. This project shall be constructed in conjunction with VDOT Route 1 improvements.

Project Benefit: Reinforce the Woodbridge pressure zone with a new, stronger transmission main backbone, which is currently served by an old 10-inch cast iron water main. The project shall improve service and fire flows, and provides capacity consistent with the PWC Comprehensive Plan goals for Route 1 redevelopment.

Source Derivation: WRA East End Water System Technical Memorandum, 2001; Managed by Engineering and Planning Division - Development Department

PROJECT PICTURE



PROJECT FUNDING

PRE-FY22	FY22	FY23	FY24	FY25	FY26	POST-FY26	TOTAL
6781	150	0	0	0	0	0	6931

Proposed Funding Sources	
Exp. Fund (02) – Availability Fees	50%
Commit. Fund (03) – Availability Fees	-
Repl. Fund (04) – User Rates	50%
Other Contrib. – Development Contributions	-
PROJECT TOTAL	100%