

PWCSA CAPITAL IMPROVEMENT PROJECT DATA SHEET

PROJECT INFORMATION

Project Name: Gainesville to Manassas South Connector
CIP Number: WAT-122
JDE Number(s): 22WMSM0101, 24WMSM0101
Location: Harry J Parish Blvd. to Pennsylvania Ave.
Pressure Zone: MS – Manassas Southside, GW – Gainesville
Sewershed: GD – Godwin Drive
Magisterial District: BR – Brentsville, CO – Coles
Project Estimate: OPCC
Estimate By: Engineering and Planning Division, CH2M, Hazen

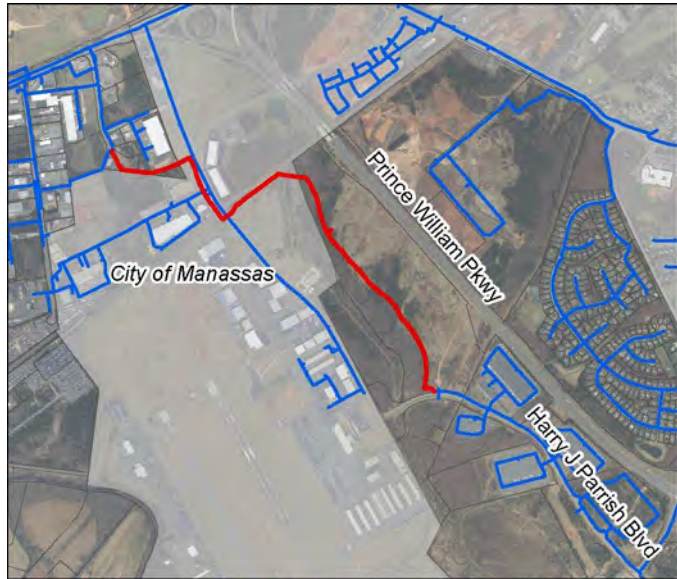
PROJECT DESCRIPTION

Project Description: Construction of approximately 6,500 feet of 16-inch water main to interconnect the Manassas Southside and Gainesville pressure zones. This project also includes the construction of a pressure control valve vault to regulate the flows and pressures between zones.

Project Benefit: Provides the capability to convey water between pressure zones at the same hydraulic gradient for increased reliability and redundancy. Additionally, this project shall provide a secondary route for the transmission of water from Fairfax Water to all areas surrounding the City of Manassas served by the SA.

Source Derivation: Engineering and Planning Division; WRA Water Supply and Distribution System Optimization Study, 2002; Managed by the Engineering and Planning Division and Project Management Office.

PROJECT PICTURE



PROJECT FUNDING

PRE-FY24	FY24	FY25	FY26	FY27	FY28	POST- FY28	TOTAL
820	0	0	0	378	2500	1556	5254

Proposed Funding Sources	
Exp. Fund (02) – Availability Fees	45%
Commit. Fund (03) – Availability Fees	-
Repl. Fund (04) – User Rates	45%
Other Contrib. – Development Contributions	10%
PROJECT TOTAL	100%