

PWCSA CAPITAL IMPROVEMENT PROJECT DATA SHEET

PROJECT INFORMATION

Project Name: Dawson Landing Sewage Pumping Station, L51
CIP Number: SPS-137
JDE Number(s): 24SNEL0401
Location: 1599 Whistling Swan Way, Woodbridge
Pressure Zone: WL – Woodbridge
Sewershed: NE – Neabsco
Magisterial District: WB – Woodbridge
Project Estimate: OPCC
Estimate By: Engineering and Planning Division

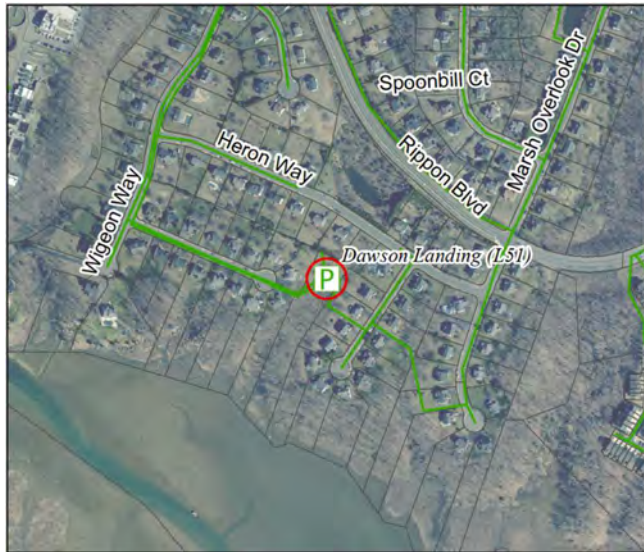
PROJECT DESCRIPTION

Project Description: Replacement of the existing 26-year-old Dawson Landing Sewage Pumping Station to upgrade structural, mechanical (piping and pumping capacity), electrical, SCADA, and HVAC systems as required, and include security measures and emergency storage considerations.

Project Benefit: The project shall replace defective pumps to improve pump station operation, reliability, security, reduce maintenance costs and ensure projected long-term wastewater flows are satisfied.

Source Derivation: Engineering and Planning Division; Managed by the Project Management Office.

PROJECT PICTURE



PROJECT FUNDING

PRE-FY24	FY24	FY25	FY26	FY27	FY28	POST- FY28	TOTAL
206	0	517	1000	3071	2000	0	6794

Proposed Funding Sources	
Exp. Fund (02) – Availability Fees	-
Commit. Fund (03) – Availability Fees	-
Repl. Fund (04) – User Rates	100%
Other Contrib. – Development Contributions	-
PROJECT TOTAL	100%