

PWCSA CAPITAL IMPROVEMENT PROJECT DATA SHEET

PROJECT INFORMATION

Project Name: Melrose Sewage Pumping Station, L10
CIP Number: SPS-136
JDE Number(s): 24SDML0201
Location: 3350 Melrose Ave., Triangle
Pressure Zone: DT – Dumfries/Triangle
Sewershed: MR – Melrose
Magisterial District: PO – Potomac
Project Estimate: OPCC
Estimate By: Engineering and Planning Division

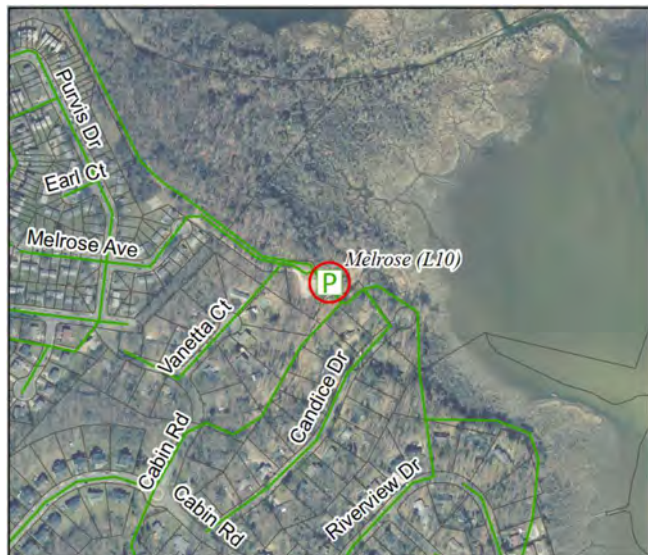
PROJECT DESCRIPTION

Project Description: Rehabilitation of the existing 47-year-old Melrose Sewage Pumping Station to include an increase in firm pumping capacity to meet current design standards, and to improve grinder, electrical, SCADA, and HVAC systems, plus security measures and emergency storage considerations.

Project Benefit: The project shall improve pump station operation, reliability, security, reduce maintenance costs and ensure projected long-term wastewater flows are satisfied.

Source Derivation: Engineering and Planning Division; Managed by the Project Management Office.

PROJECT PICTURE



PROJECT FUNDING

PRE-FY24	FY24	FY25	FY26	FY27	FY28	POST- FY28	TOTAL
208	708	2000	3353	2000	0	0	8269

Proposed Funding Sources	
Exp. Fund (02) – Availability Fees	-
Commit. Fund (03) – Availability Fees	-
Repl. Fund (04) – User Rates	100%
Other Contrib. – Development Contributions	-
PROJECT TOTAL	100%