

PWCSA CAPITAL IMPROVEMENT PROJECT DATA SHEET

PROJECT INFORMATION

Project Name: Heritage Hunt Sewage Pumping Station, L52 Replacement and Force Main Extension

CIP Number: SPS-113

JDE Number(s): 22SLBL5202, 24SLBL5202, 22SLBM9001, 24SLBM9001

Location: 6588 Alderwood Way, Gainesville

Pressure Zone: HM – Haymarket

Sewershed: LB – Little Bull Run

Magisterial District: GN – Gainesville

Project Estimate: PER

Estimate By: Engineering and Planning Division

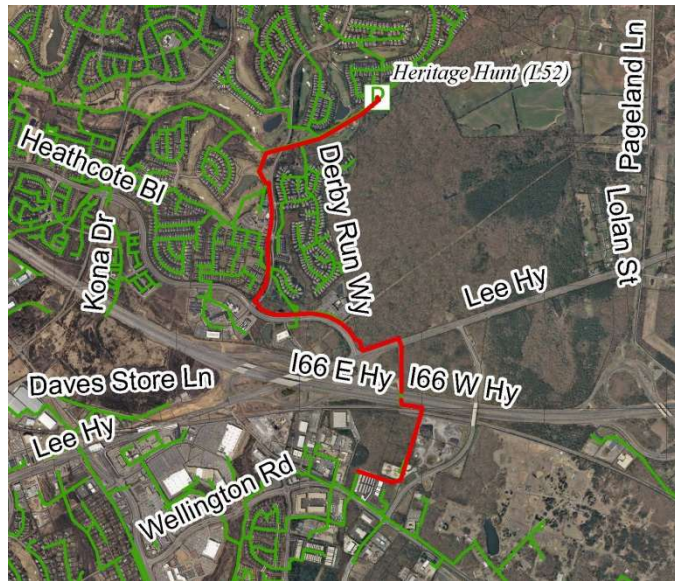
PROJECT DESCRIPTION

Project Description: Replacement of the Heritage Hunt Sewage Pumping Station to increase pumping capacity from 5 MGD to approximately 8 MGD. The project will include the installation of a manual screen, dual channel grinders, dry-pit submersible pumps and associated piping and valves, bioxide odor control system, sump pumps, new flowmeters, and a monorail crane system. This project also includes the design and construction of approximately 5,950 feet of 24-inch force main from the station to the existing 24-inch force main south of I-66, parallel to the existing 10-inch and 16-inch force mains already in service.

Project Benefit: Continued access to public sewer service to residential and commercial developments occurring in the Little Bull Run and Catharpin Creek sewersheds in conformance with the PWC Comprehensive Plan. Ultimate development of the service area will exceed the capacity of the current station. Discharge capacity of the station will be increased to meet current and future development needs.

Source Derivation: Engineering and Planning Division; Patton Harris Rust & Assoc.: Study of Alternative Routings of Wastewater from the Immediate Area of Haymarket, 1994; Managed by Engineering and Planning Division

PROJECT PICTURE



PROJECT FUNDING

PRE-FY22	FY22	FY23	FY24	FY25	FY26	POST-FY26	TOTAL
3500	2200	13000	13000	1838	4500	0	38038

Proposed Funding Sources	
Exp. Fund (02) – Availability Fees	50%
Commit. Fund (03) – Availability Fees	-
Repl. Fund (04) – User Rates	50%
Other Contrib. – Development Contributions	-
PROJECT TOTAL	100%