

**PWCSA CAPITAL IMPROVEMENT PROJECT DATA SHEET**

**PROJECT INFORMATION**

**Project Name:** Spittle Office Building Addition  
**CIP Number:** MISC-112  
**JDE Number(s):** 12NSCH0009, 14NSCH0009  
**Location:** Spittle Complex  
**Pressure Zone:** HO – Hoadly  
**Sewershed:** WA – Airport  
**Magisterial District:** OC – Occoquan  
**Project Estimate:** PER  
**Estimate By:** Engineering and Planning Division

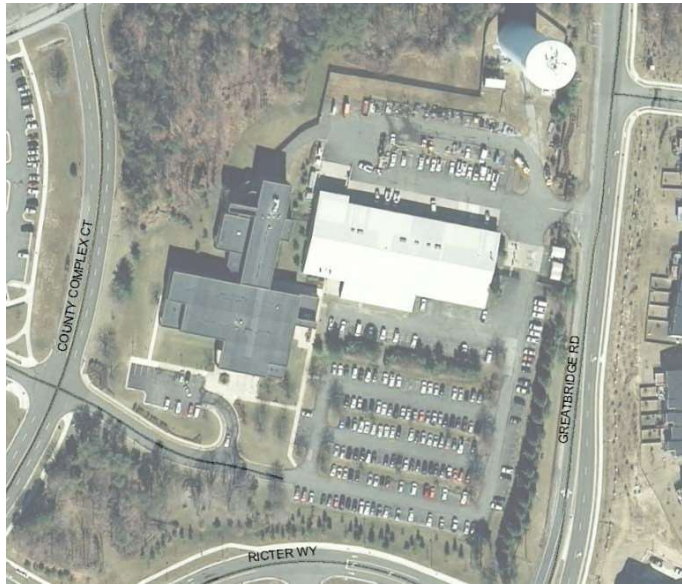
**PROJECT DESCRIPTION**

**Project Description:** Design and construction of a three story, forty-two thousand square foot addition to the existing Spittle Building to accommodate the current and future space needs of the SA. The project also includes one hundred parking spaces and associated access drives.

**Project Benefit:** This project will improve the functionality of SA facilities by providing additional space for expansion of staff, reduce energy costs, and ensure a safe and comfortable work environment for SA staff.

**Source Derivation:** Engineering and Planning Division; Managed by Engineering and Planning Division

**PROJECT PICTURE**



**PROJECT FUNDING**

PRE-FY22	FY22	FY23	FY24	FY25	FY26	POST-FY26	TOTAL
1189	0	400	7000	8000	261	0	16850

Proposed Funding Sources	
Exp. Fund (02) – Availability Fees	50%
Commit. Fund (03) – Availability Fees	-
Repl. Fund (04) – User Rates	50%
Other Contrib. – Development Contributions	-
<b>PROJECT TOTAL</b>	<b>100%</b>